



WELCOME TO

Grow Life Care



www.growlifecare.biz | info@growlifecare.biz

CMD MESSAGE

Welcome to MISWA CARE WELLNESS PRIVATE LIMITED where our passion for innovation and excellence drives everything we do. From the very beginning, our goal has been to create products that not only meet but exceed the expectations of our customers. Each item we offer is a result of meticulous research, thoughtful design, and rigorous testing, ensuring that we deliver nothing but the best.

Our journey is fueled by a commitment to quality and a desire to make a meaningful impact on everyday lives. We understand that our customers rely on us for products that enhance their comfort, convenience, and creativity. This trust inspires us to continually push the boundaries of what is possible, always striving to introduce solutions that are both innovative and reliable.



Company Group Profile...

- Group Establishment Year of 2004
- Ayurvedic Medicine Mfd. from 2004
- 250+ Products From 2004
- Third Party/ Lease License Manufacturing



Grow Life Care..



- Well Qualified Management Team
- Certified Products with 100% Satisfaction Gurantee
- ndustry experiance of around 20 years
- Customer Care Support 24 x 7
- 100% Organics Productivity



HUMAN ANATOMY

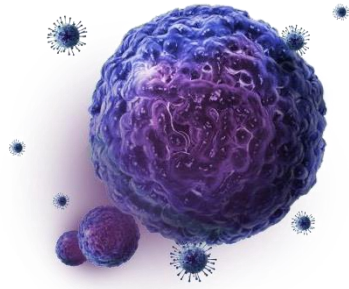


We need 7 key nutrients everyday for a healthy functioning of our body, like water, carbohydrates, fats, proteins besides vitamins, minerals and fiber. We often consume adequate quantities of water, carbohydrates and fats but may remain deficient in our intake of protein, vitamins, minerals and fiber. Leading health authorities like WHO, ICMR and NIN recommend a daily intake of each of these types of nutrients as per their RDA recommendations to sustain good health.

HUMAN ANATOMY



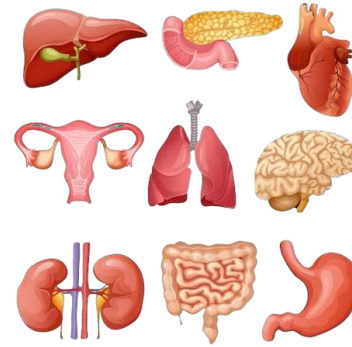
atoms



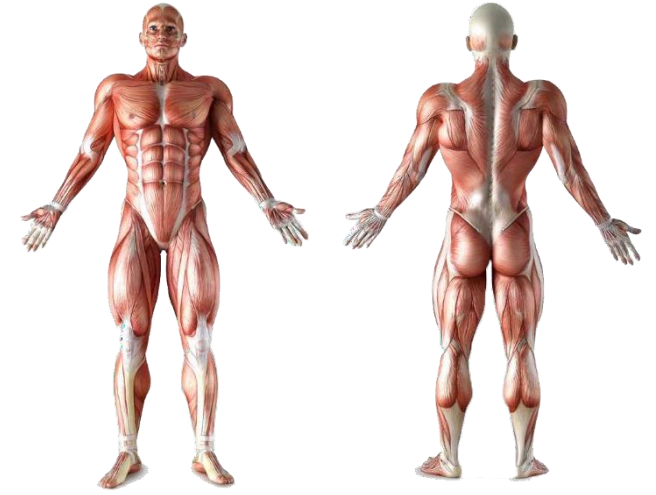
CELLS



tissues



ORGAN



BODY



HOW TO BRING BACK THE OPTIMAL HEALTH?



OPTIMAL HEALTH Grow Life Care Marketing



The Only Answer Is
Change Your Life Style
(Aware About Food, Lifestyle &
Lifestyle Disorder

Fulfil The Nutritional Deficiency
With
(Nutritional Supplement
& Ayurveda

If We Aware /Educate About Life Style Discover, Then We Will De Healthy Without Any Medication

01 Economical Survey



Inflation Survey 02

Year	Rupees
1946	- 10/-
1966	- 100/-
1986	- 1000/-
2006	- 10000/-
2026	- 100000/-

2026 में अपना घर चलाने के लिए आपको महीने के लगभग 1 लाख रुपये की आवश्यकता होगी, और अपने सारे खर्च पूरे करने के लिए आपको इससे दो से तीन गुना अधिक आय की जरूरत पड़ेगी।

सोचिए, आने वाले समय में आप अपने परिवार को कैसे survive कर पाएंगे?



Certificate of Incorporation



भारत सरकार
GOVT. OF INDIA

सत्यमेव जयते

Caution : Income Tax Department does not send e-mails regarding refunds and does not seek any taxpayer information like username, password, details of ATM, bank accounts, credit cards, etc. Taxpayers are advised not to part with such information on the basis of emails.

Caution : Income Tax Department does not send e-mails regarding refunds and does not seek any taxpayer information like username, password, details of ATM, bank accounts, credit cards, etc. Taxpayers are advised not to part with such information on the basis of emails.

Types Of Income



- 1. Sponsor Bonus**
- 2. Single Leg Level Bonus**
- 3. Matching Bonus**
- 4. Single Leg Sponsor Matching Bonus**
- 5. Promotional Bonus**
- 6. Rank Bonus**
- 7. Funds & Royalty Bonus**
- 8. Reward/Award Bonus**



Direct Sponsor Bonus



200/-

(Each Direct Bonus Rs. 200/-)



Single Leg Level Bonus.

S.NO.	LEVEL BONUS	TEAM	INCOME
1	200	5	₹1,000
2	80	25	₹2,000
3	60	125	₹7,500
4	30	625	₹18,725
5	30	3,125	₹73,750
6	25	15,625	₹3,90,625
7	20	78,125	₹15,62,500
8	10	3,90,125	₹39,06,250
TOTAL	455	4,88,280	₹59,06,350

JOINING PACKAGE

Joining Sales Matching Bonus

Joining	Amount	Capping (24 Hrs)
1 PV	1500/-	3000/- 10 Pair

**Note : 10 Pair Daily 3000 Income and
Monthly 90,000 Income**



Matching Bonus

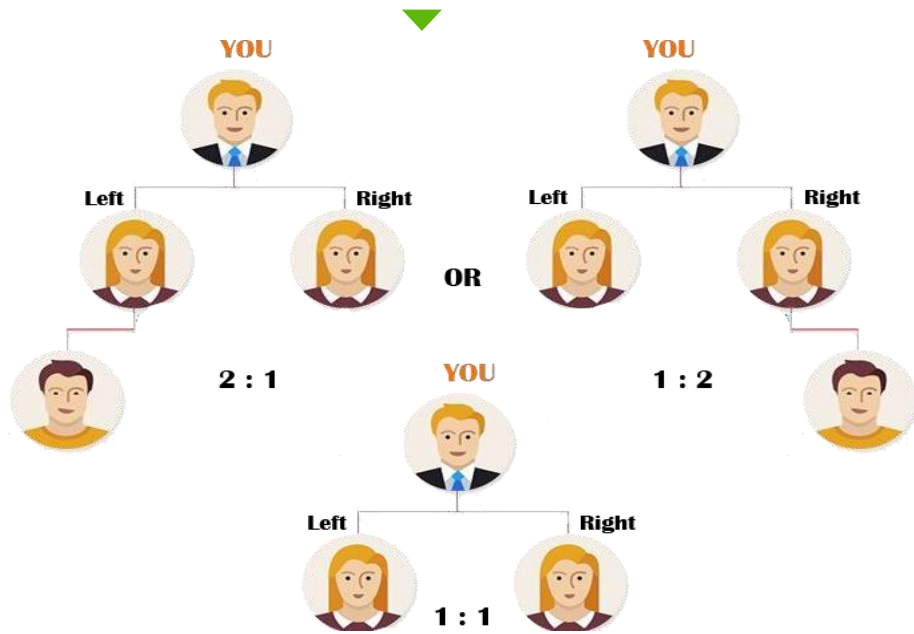
Upgrade Product Package's

Joining	Amount	Capping (24 Hrs)
2 PV	2400/-	5100/- 17 Pair
3 PV	4800/-	10200 /- 34 Pair

**Note : 34 Pair Daily 10200 Income and
Monthly 306000 Income**



Matching Income



20%



Joining Matching Bonus– 300

Note : first Pair 2:1 or 1:2 and Next 1:1

One Pair Matching Income

Note : Daily 9000 Income and Monthly 270000 Income

Single Leg Sponsor Matching Bonus



Single Leg Magic Bonus 40%

S.NO.	SPONSOR	DAILY BONUS	MONTHLY BONUS
1	1 Direct	1,200/-	36,000
2	2 Direct	2,400/-	72,000
3	4 Direct	4,800/-	1,44,000
4	8 Direct	9,600/-	2,88,000
5	16 Direct	19,200/-	5,76,000
6	25 Direct	30,000/-	9,00,000
7	35 Direct	42,000/-	12,60,000
8	60 Direct	72,000/-	21,60,000

Note : 40% of your Direct sponsor Matching bonus from single leg after you become your Direct sponsor

Promotional Bonus..

सबसे अलग, सबसे खास

Package : 1500

अब प्रोडक्ट खरीदनेपर 200% कै शबैक

Rs. 100 For 20 Weeks

ज़्यादा खरीदें, ज़्यादा बचत कर



Rank Bonus..

S.NO.	LEVEL	TEAM	LEVEL INCOME
1	SILVER	1 : 2	₹200
2	STAR SILVER	3 : 6	₹600
3	GOLD	9 : 18	₹1200
4	STAR GOLD	20 : 60	₹3500
5	PEARL	60 : 150	₹9,000
6	PEARL STAR	150 : 500	₹24,000
7	DIAMOND	500 : 1500	₹50,000
8	EMERALD	1500 : 4500	₹1,50,000
9	EMERALD STAR	5000 : 15000	₹5,00,000
10	RUBI	15000 : 45000	₹10,00,000
11	RUBI STAR	50000 : 150000	₹25,00,000
12	SAPPHIRE	150000 : 450000	₹50,00,000
13	CROWN	500000 : 1500000	₹15,00,000
14	AMBASSADAR	1500000 : 4500000	₹4,00,00,000

Funds & Royalty

- Bike Fund 5%
- Car Fund 3%
- Travel Fund 1%
- House Fund 2%

Extra Bonus

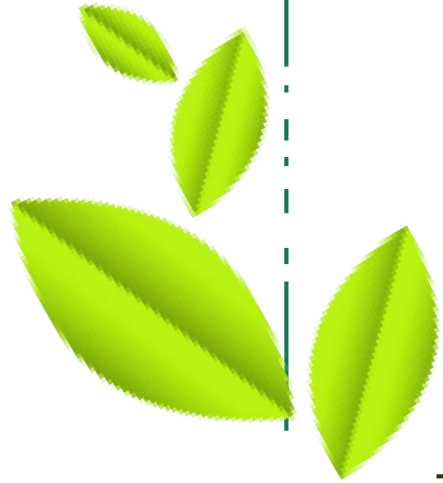


Funds & Royalty Bonus

S.NO.	RANK	FUND	% MONTH
6	PEARL STAR	BIKE FUND	CTO 5% 3 MONTH
8	EMRALD	CAR FUND	CTO 3% 6 MONTH
10	RUBI	TRAVEL FUND	CTO 1% 12 MONTH
12	SAPPHIRE	HOUSE FUND	CTO 2% 24 MONTH



Fund & Royalty Bonus



BONUS

Royalty Bonus 1 %

14 LEVEL : AMBASSADAR



Reward Bonus..

S.NO.	LEVEL	TEAM	REWARD
1	SILVER	1 : 2	
2	STAR SILVER	3 : 6	
3	GOLD	9 : 18	
4	STAR GOLD	20 : 60	
5	PEARL	60 : 150	Android Mobile
6	PEARL STAR	150 : 500	Bike D.P.
7	DIAMOND	500 : 1500	CAR D.P. 1.5 Lac
8	EMERALD	1500 : 4500	CAR D.P. 2.5 LAC + TOUR
9	EMERALD STAR	5000 : 15000	CAR D.P 5 LAC + TOUR
10	RUBI	15000 : 45000	CRETA CAR + TOUR
11	RUBI STAR	50000 : 150000	INNOVA CAR + TOUR
12	SAPPHIRE	150000 : 450000	HOUSE
13	CROWN	500000 : 1500000	FORTUNER CAR
14	AMBASSADAR	1500000 : 4500000	1 CARORE + AUDI CAR



Repurchase Plan

www.growlifecare.biz



Re-Purchase Part.

Types Of Income

1. **Retaile Profit 5% to 50%**
2. **Matching Bonus 8%**
3. **Monthly Field Allowance-MFA**
4. **Franchisee Sponsor 4%**
5. **Rank Bonus**
6. **Reward Income**
7. **Fund Income**

www.growlifecare.biz



Retaile Profit.

Retaile Profit.
Retaile Price

5% to 50%

Big Opportunity



Re - purchase Matching Income

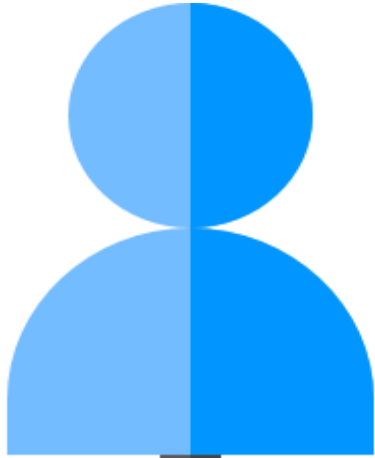


You Will Get Re - purchase Matching Income 8% Of BV

Matching Bonus

Matching Income 8% = 1600

Self BV



20000 BV



20000 BV



Franchisee Sponsor Bonus



4 %

Big Opportunity





GROW LIFE MAKER

MFA

Self BV	L / R BV	Monthly
1,000	10,000	1500 x 3

Get 3 Month Countinusly



www.growlifecare.biz





GROW LIFE MAKER

MFA

Self BV	L / R BV	Monthly
2,000	40,000	5000 x 6

Get 6 Month Countinously





GROW LIFE MAKER

MFA

Self BV	L / R BV	Monthly
3,000	80,000	10000 x 6

Get 6 Month Countinously





GROW LIFE MAKER

MFA

Self BV	L / R BV	Monthly
5,000	1,80,000	22000 x 8

Get 8 Month Countinously



Rank Bonus..

S.NO.	LEVEL	TEAM	INCOME
1	SILVER	10000 : 20000 BV	1000
2	STAR SILVER	40000 : 100000	4000
3	GOLD	150000 : 400000	12000
4	STAR GOLD	500000 : 1000000	20000
5	PEARL	1000000 : 4000000	60000
6	PEARL STAR	4000000 : 1.00cr	100000
7	DIAMOND	1.00cr : 4.00cr	4.00 Lac
8	EMERALD	4.00cr : 8.00cr	8 .00 Lac
9	EMERALD STAR	8.00cr : 16.00cr	16.00 Lac
10	RUBI	16.00cr : 32.00cr	32.00 Lac
11	RUBI STAR	30.00cr : 60.00cr	60.00 Lac
12	SAPPHIRE	100.00cr : 200.00cr	1.50cr
13	CROWN	300.00cr : 600.00cr	3.00c
14	AMBASSADAR	800.00cr : 1600.00cr	8.00cr

Reward Bonus..

S.NO.	LEVEL	TEAM	REWARD
1	SILVER	10000 : 20000 BV	
2	STAR SILVER	40000 : 100000	4000
3	GOLD	150000 : 400000	Android Phone
4	STAR GOLD	500000 : 1000000	Laptop
5	PEARL	1000000 : 4000000	HF Delux Bike
6	PEARL STAR	4000000 : 1.00cr	Splender Bike
7	DIAMOND	1.00cr : 4.00cr	Swift Car + Tour
8	EMRALD	4.00cr : 8.00cr	Creta Car + Dubai
9	EMRALD STAR	8.00cr : 16.00cr	Innova Car + Tour
10	RUBI	16.00cr : 32.00cr	Fortuner Car + Tour
11	RUBI STAR	30.00cr : 60.00cr	BMW Car + Tour
12	SAPPHIRE	100.00cr : 200.00cr	Audi Q7+ Tour
13	CROWN	300.00cr : 600.00cr	Jaguar Car + Tour
14	AMBASSADAR	800.00cr : 1600.00cr	Dream House

Funds & Royalty Bonus

S.NO.	RANK	FUND	% MONTH
6	PEARL STAR	BIKE FUND	CTO 5% 6 MONTH
8	EMERALD	CAR FUND	CTO 3% 12 MONTH
10	RUBI	TRAVEL FUND	CTO 2% 24 MONTH
12	SAPPHIRE	HOUSE FUND	CTO 1% 36 MONTH



Type of Franchisee..



Franchisee Amount

Start
10,000 to 25 Lac

Type of Income

- Sponsor Commission 4%
- Retail Profit 5% - 50%
- Monthly Sale Commission 5%-15%
- Cash Back Income

(Note : Minimum Franchisee Amount : 10000/-)

Member Carrier...

1. Nomination Facility for hole Life
2. Natural Death Benefit Rs.5000 to 10000 upto 60th years
3. Accidental Cover of 1 Lac for Pearl Star Member
4. Co-Founder Member Turn Over Profit 5%-8% Lifetime
5. Rs.11000 for Doughter Wedding for Pearl Star Member
6. Dream House Fund 50 Lac to 1.00cr



Terms And Conditions

- Required Document AADHAR Card
- Min. Withdrawal Amount 300
- 3 Id on 1 Pan Card
- TDS Deduction 5%
- Service Charge 5%
- Payment Confirm admin after with in 24 Hours
- 1 Left & 1 Right Compulsory for all Income's
- KYC Compulsory for Bank Withdrawal
- ID to ID fund transfer charge 5%





Thank You All So

www.growlifecare.biz

